

# Plane and Planarity Thresholds for Random Geometric Graphs\*

Ahmad Biniaz<sup>†</sup>    Evangelos Kranakis<sup>‡</sup>    Anil Maheshwari<sup>†</sup>    Michiel Smid<sup>†</sup>

September 13, 2019

## Abstract

A random geometric graph,  $G(n, r)$ , is formed by choosing  $n$  points independently and uniformly at random in a unit square; two points are connected by a straight-line edge if they are at Euclidean distance at most  $r$ . For a given constant  $k$ , we show that  $n^{\frac{-k}{2k-2}}$  is a distance threshold function for  $G(n, r)$  to have a connected subgraph on  $k$  points. Based on this, we show that  $n^{-2/3}$  is a distance threshold for  $G(n, r)$  to be plane, and  $n^{-5/8}$  is a distance threshold to be planar. We also investigate distance thresholds for  $G(n, r)$  to have a non-crossing edge, a clique of a given size, and an independent set of a given size.

## 1 Introduction

Wireless networks are usually modeled as disk graphs in the plane. Given a set  $P$  of points in the plane and a positive parameter  $r$ , the *disk graph* is the geometric graph with vertex set  $P$  which has a straight-line edge between two points  $p, q \in P$  if and only if  $|pq| \leq r$ , where  $|pq|$  denotes the Euclidean distance between  $p$  and  $q$ . If  $r = 1$ , then the disk graph is referred to as *unit disk graph*. A *random geometric graph*, denoted by  $G(n, r)$ , is a geometric graph formed by choosing  $n$  points independently and uniformly at random in a unit square; two points are connected by a straight-line edge if and only if they are at Euclidean distance at most  $r$ , where  $r = r(n)$  is a function of  $n$  and  $r \rightarrow 0$  as  $n \rightarrow \infty$ .

We say that two line segments in the plane *cross* each other if they have a point in common that is interior to both edges. Two line segments are *non-crossing* if they do not cross. Note that two non-crossing line segments may share an endpoint. A geometric graph is said to be *plane* if its edges do not cross, and *non-plane*, otherwise. An edge in a geometric graph is said to be *free* (or *non-crossing*) if its interior is not intersected by any other edge of the graph. A graph is *planar* if and only if it does not contain  $K_5$  (the complete graph on 5 vertices) or  $K_{3,3}$  (the complete bipartite graph on six vertices partitioned into two parts each of size 3) as a minor. A *non-planar graph* is a graph which is not planar. A *clique* in a graph is a subset of vertices of the graph such that every two of them are adjacent. An *independent set* in a graph is a subset of vertices of the graph such that none of them are adjacent.

A graph property  $\mathcal{P}$  is *increasing* if a graph  $G$  satisfies  $\mathcal{P}$ , then by adding edges to  $G$ , the property  $\mathcal{P}$  remains valid in  $G$ . Similarly,  $\mathcal{P}$  is *decreasing* if a graph  $G$  satisfies  $\mathcal{P}$ , then by removing edges from  $G$ , the property  $\mathcal{P}$  remains valid in  $G$ .  $\mathcal{P}$  is called a *monotone* property if  $\mathcal{P}$  is either increasing or decreasing. Connectivity and “having a clique of size  $k$ ” are increasing monotone properties, while planarity, “being plane”, and “having an independent set of size  $k$ ”

---

\*A preliminary version of this paper appeared in ALGOSENSORS 2015.

<sup>†</sup>School of Computer Science, University of Windsor, Windsor, Canada.

<sup>‡</sup>School of Computer Science, Carleton University, Ottawa, Canada.

are decreasing monotone properties. In this paper we will see that “having a free edge” is not a monotone property in  $G(n, r)$ .

By [10, 14] any monotone property of random geometric graphs has a *sharp threshold* function (see [8] for a definition). The thresholds in random geometric graphs are expressed by the distance  $r$ . In the sequel, the term w.h.p. (with high probability) is to be interpreted to mean that the probability tends to 1 as  $n \rightarrow \infty$ . For an increasing property  $\mathcal{P}$ , the *threshold* is a function  $t(n)$  such that if  $r = o(t(n))$  then w.h.p.  $\mathcal{P}$  does not hold in  $G(n, r)$ , and if  $r = \omega(t(n))$  then w.h.p.  $\mathcal{P}$  holds in  $G(n, r)$ . Symmetrically, for a decreasing property  $\mathcal{P}$ , the *threshold* is a function  $t(n)$  such that if  $r = o(t(n))$  then w.h.p.  $\mathcal{P}$  holds in  $G(n, r)$ , and if  $r = \omega(t(n))$  then w.h.p.  $\mathcal{P}$  does not hold in  $G(n, r)$ . Note that a threshold function may not be unique. It is well known that  $\sqrt{\ln n/n}$  is a connectivity threshold for  $G(n, r)$ ; see [15, 20, 21]. In this paper we investigate (not necessarily sharp) thresholds in random geometric graphs for having a connected subgraph of constant size, being plane, and being planar.

## 1.1 Related Work

Random graphs were first defined and formally studied by Gilbert in [11] and Erdős and Rényi [9]. It seems that the concept of a random geometric graph was first formally suggested by Gilbert in [12] and for that reason it is also known as Gilbert’s disk model. These classes of graphs are known to have numerous applications as a model for studying communication primitives (broadcasting, routing, etc.) and topology control (connectivity, coverage, etc.) in idealized wireless sensor networks. They have been extensively studied in theoretical computer science and mathematical sciences over last few decades.

An instance of Erdős-Rényi graph [9] is obtained by taking  $n$  vertices and connecting any two with probability  $p$ , independently of all other pairs; the graph derived by this scheme is denoted by  $G_{n,p}$ . In  $G_{n,p}$  the threshold is expressed by the edge existence probability  $p$ , while in  $G(n, r)$  the threshold is expressed in terms of  $r$ . In both random graphs and random geometric graphs, property thresholds are of great interest [5, 8, 10, 14, 19]. Note that edge crossing configurations in  $G(n, r)$  have a geometric nature, and as such, have no analogues in the context of the Erdős-Rényi model for random graphs. However, planarity, and having a clique or an independent set of specific size are of interest in both  $G_{n,p}$  and  $G(n, r)$ .

Bollobás and Thomason [6] showed that any monotone property in random graphs has a threshold function. See also a result of Friedgut and Kalai [10], and a result of Bourgain and Kalai [7]. In the Erdős-Rényi random graph  $G_{n,p}$ , the connectivity threshold is  $p = \log n/n$  and the threshold for having a giant component is  $p = 1/n$ ; see [2]. The planarity threshold for  $G_{n,p}$  is  $p = 1/n$ , and its threshold for having a clique of size  $k$  is  $p = n^{-2/(k-1)}$ ; see [5, 24].

A general reference on random geometric graphs is [23]. There is extensive literature on various aspects of random geometric graphs of which we mention the related work on coverage by [16, 17] and a review on percolation, connectivity, coverage and coloring by [4]. As in random graphs, any monotone property in random geometric graphs has a threshold function [8, 14, 18, 19].

Random geometric graphs have a connectivity threshold of  $\sqrt{\ln n/n}$ ; see [15, 20, 21]. Gupta and Kumar [15] provided a connectivity threshold for points that are uniformly distributed in a disk. By a result of Penrose [22], in  $G(n, r)$ , any threshold function for having no isolated vertex (a vertex of degree zero) is also a connectivity threshold function. Panchapakesan and Manjunath [20] showed that  $\sqrt{\ln n/n}$  is a threshold for being an isolated vertex in  $G(n, r)$ . This implies that  $\sqrt{\ln n/n}$  is a connectivity threshold for  $G(n, r)$ . For  $k \geq 2$ , the details on the  $k$ -connectivity threshold in random geometric graphs can be found in [22, 23]. Connectivity of random geometric graphs for points on a line is studied by Godehardt and Jaworski [13]. Appel

and Russo [3] considered the connectivity under the  $L_\infty$ -norm.

## 1.2 Our Results

In this paper we investigate thresholds for some monotone properties in random geometric graphs. In Section 2 we show that for a constant  $k$ , the distance threshold for having a connected subgraph on  $k$  points is  $n^{\frac{-k}{2k-2}}$ . We show that the same threshold is valid for the existence of a clique of size  $k$ . Based on that, we prove the following thresholds for a random geometric graph to be plane or planar. In Section 3, we prove that  $n^{-2/3}$  is a distance threshold for a random geometric graph to be plane. In Section 4, we prove that  $n^{-5/8}$  is a distance threshold for a random geometric graph to be planar. In Section 5 we investigate the existence of free edges in random geometric graphs. In Section 6, we investigate thresholds for having an independent set of size  $k$ .

## 2 The threshold for having a connected subgraph on $k$ points

In this section we provide a distance threshold for “the existence of connected subgraphs of constant size” which is an increasing property. We note that some (unspecified) threshold has been claimed in [23, Chapter 3]. We give a self-contained proof that for a given constant  $k$ , the function  $n^{\frac{-k}{2k-2}}$  is a threshold for the existence of a connected subgraph on  $k$  points in  $G(n, r)$ . Specifically, we prove that if  $r = o(n^{\frac{-k}{2k-2}})$  then w.h.p.  $G(n, r)$  has no connected subgraph on  $k$  points, and if  $r = \omega(n^{\frac{-k}{2k-2}})$  then w.h.p.  $G(n, r)$  has a connected subgraph on  $k$  points. We also show that the same threshold function holds for the existence of a clique of size  $k$ . We use our proof idea also in the proofs of Theorems 2 and 4.

**Theorem 1.** *Let  $k \geq 2$  be an integer constant. Then,  $n^{\frac{-k}{2k-2}}$  is a distance threshold function for  $G(n, r)$  to have a connected subgraph on  $k$  points.*

*Proof.* Let  $P_1, \dots, P_{\binom{n}{k}}$  be an enumeration of all subsets of  $k$  points in  $G(n, r)$ . Let  $DG[P_i]$  be the subgraph of  $G(n, r)$  that is induced by  $P_i$ . Let  $X_i$  be the random variable such that

$$X_i = \begin{cases} 1 & \text{if } DG[P_i] \text{ is connected,} \\ 0 & \text{otherwise.} \end{cases}$$

Let the random variable  $X$  count the number of sets  $P_i$  for which  $DG[P_i]$  is connected. It is clear that

$$X = \sum_{i=1}^{\binom{n}{k}} X_i. \tag{1}$$

Observe that  $E[X_i] = \Pr[X_i = 1]$ . Since the random variables  $X_i$  have identical distributions, we have

$$E[X] = \binom{n}{k} E[X_1]. \tag{2}$$

We obtain an upper bound and a lower bound for  $\Pr[X_i = 1]$ . First, partition the unit square into squares of side equal to  $r$ . Let  $\{s_1, \dots, s_{1/r^2}\}$  be the resulting set of squares. For a square  $s_t$ , let  $S_t$  be the  $kr \times kr$  square which has  $s_t$  on its left bottom corner; see Figure 1(a).  $S_t$  contains at most  $k^2$  squares of side length  $r$  ( $S_t$  may be on the boundary of the unit square). Let

$A_{i,t}$  be the event that all points in  $P_i$  are contained in  $S_t$ . Observe that if  $DG[P_i]$  is connected then  $P_i$  lies in  $S_t$  for some  $t \in \{1, \dots, 1/r^2\}$ . Therefore,

if  $DG[P_i]$  is connected, then  $(A_{i,1} \vee A_{i,2} \vee \dots \vee A_{i,1/r^2})$ ,

and hence we have

$$\Pr[X_i = 1] \leq \sum_{t=1}^{1/r^2} \Pr[A_{i,t}] \leq \sum_{t=1}^{1/r^2} (k^2 r^2)^k = k^{2k} r^{2k-2}. \quad (3)$$

Now, partition the unit square into squares with diagonal length equal to  $r$ . Each such square has side length equal to  $r/\sqrt{2}$ . Let  $\{s_1, \dots, s_{2/r^2}\}$  be the resulting set of squares. Let  $B_{i,t}$  be the event that all points of  $P_i$  are in  $s_t$ . Observe that if all points of  $P_i$  are in the same square, then  $DG[P_i]$  is a complete graph and hence connected. Therefore,

if  $(B_{i,1} \vee B_{i,2} \vee \dots \vee B_{i,2/r^2})$ , then  $DG[P_i]$  is connected,

and hence we have

$$\Pr[X_i = 1] \geq \sum_{t=1}^{2/r^2} \Pr[B_{i,t}] = \sum_{t=1}^{2/r^2} \left(\frac{r^2}{2}\right)^k = \frac{1}{2^{k-1}} r^{2k-2}. \quad (4)$$

Since  $k \geq 2$  is a constant, Inequalities (3) and (4) and Equation (2) imply that

$$\mathbb{E}[X_i] = \Theta(r^{2k-2}), \quad (5)$$

$$\mathbb{E}[X] = \Theta(n^k r^{2k-2}). \quad (6)$$

If  $n \rightarrow \infty$  and  $r = o(n^{\frac{-k}{2k-2}})$  we conclude that the following inequalities are valid

$$\begin{aligned} \Pr[X \geq 1] &\leq \mathbb{E}[X] \text{ (by Markov's Inequality)} \\ &= \Theta(n^k r^{2k-2}) \text{ (by (6))} \\ &= o(1). \end{aligned} \quad (7)$$

Therefore, w.h.p.  $G(n, r)$  has no connected subgraph on  $k$  points.

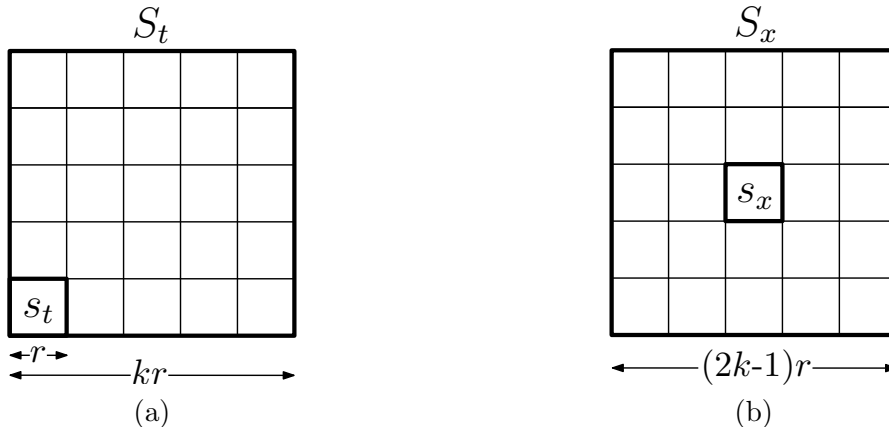


Figure 1: (a) The square  $S_t$  has  $s_t$  on its left bottom corner. (b) The square  $S_x$  which is centered at  $s_x$ .

In the rest of the proof, we assume that  $r = \omega(n^{\frac{-k}{2k-2}})$ . In order to show that w.h.p.  $G(n, r)$  has at least one connected subgraph on  $k$  vertices, we show, using the second moment method [2], that  $\Pr[X = 0] \rightarrow 0$  as  $n \rightarrow \infty$ . Recall from Chebyshev's inequality that

$$\Pr[X = 0] \leq \frac{\text{Var}(X)}{\mathbb{E}[X]^2}. \quad (8)$$

Therefore, in order to show that  $\Pr[X = 0] \rightarrow 0$ , it suffices to show that

$$\frac{\text{Var}(X)}{\mathbb{E}[X]^2} \rightarrow 0. \quad (9)$$

In view of Identity (1) we have

$$\text{Var}(X) = \sum_{1 \leq i, j \leq \binom{n}{k}} \text{Cov}(X_i, X_j), \quad (10)$$

where  $\text{Cov}(X_i, X_j) = \mathbb{E}[X_i X_j] - \mathbb{E}[X_i] \mathbb{E}[X_j] \leq \mathbb{E}[X_i X_j]$ . If  $|P_i \cap P_j| = 0$  then  $DG[P_i]$  and  $DG[P_j]$  are disjoint. Thus, the random variables  $X_i$  and  $X_j$  are independent, and hence  $\text{Cov}(X_i, X_j) = 0$ . It is enough to consider the cases when  $P_i$  and  $P_j$  are not disjoint. Assume  $|P_i \cap P_j| = w$ , where  $w \in \{1, \dots, k\}$ . Thus, in view of Equation (10), we have

$$\begin{aligned} \text{Var}(X) &= \sum_{w=1}^k \sum_{|P_i \cap P_j|=w} \text{Cov}(X_i, X_j) \\ &\leq \sum_{w=1}^k \sum_{|P_i \cap P_j|=w} \mathbb{E}[X_i X_j]. \end{aligned} \quad (11)$$

The computation of  $\mathbb{E}[X_i X_j]$  involves some geometric considerations which are being discussed in detail below. Since  $X_i$  and  $X_j$  are 0-1 random variables,  $X_i X_j$  is a 0-1 random variable and

$$X_i X_j = \begin{cases} 1 & \text{if both } DG[P_i] \text{ and } DG[P_j] \text{ are connected,} \\ 0 & \text{otherwise.} \end{cases}$$

By the definition of the expected value we have

$$\begin{aligned} \mathbb{E}[X_i X_j] &= \Pr[X_j = 1 | X_i = 1] \Pr[X_i = 1] \\ &= \Pr[X_j = 1 | X_i = 1] \mathbb{E}[X_i]. \end{aligned} \quad (12)$$

By (5),  $\mathbb{E}[X_i] = \Theta(r^{2k-2})$ . It remains to compute  $\Pr[X_j = 1 | X_i = 1]$ , i.e., the probability that  $DG[P_j]$  is connected given that  $DG[P_i]$  is connected. Consider the  $k$ -tuples  $P_i$  and  $P_j$  under the condition that  $DG[P_i]$  is connected. Let  $x$  be a point in  $P_i \cap P_j$ . Partition the unit square into squares of side length equal to  $r$ . Let  $s_x$  be the square containing  $x$ . Let  $S_x$  be the  $(2k-1)r \times (2k-1)r$  square centered at  $s_x$ .  $S_x$  contains at most  $(2k-1)^2$  squares each of side length  $r$  (if  $S_x$  is on the boundary of the unit square then it may contain less than  $(2k-1)^2$  squares); see Figure 1(b). The area of  $S_x$  is at most  $(2kr)^2$ , and hence the probability that a specific point of  $P_j$  is in  $S_x$  is at most  $4k^2 r^2$ . Since  $P_i$  and  $P_j$  share  $w$  points, in order for  $DG[P_j]$  to be connected, the remaining  $k-w$  points of  $P_j$  must lie in  $S_x$ . Thus, the probability that  $DG[P_j]$  is connected given that  $DG[P_i]$  is connected is at most  $(4k^2 r^2)^{k-w} \leq c_w r^{2k-2w}$ ,

for some constant  $c_w > 0$ . Thus,  $\Pr[X_j = 1 | X_i = 1] \leq c_w r^{2k-2w}$ . In view of Equation (12), we have

$$\mathbb{E}[X_i X_j] \leq c'_w \cdot r^{2k-2w} \cdot r^{2k-2} = c'_w r^{4k-2w-2}, \quad (13)$$

for some constant  $c'_w > 0$ .

Since  $P_i$  and  $P_j$  are  $k$ -tuples that share  $w$  points,  $|P_i \cup P_j| = 2k - w$ . There are  $\binom{n}{2k-w}$  ways to choose  $2k - w$  points for  $P_i \cup P_j$ . Since we choose  $w$  points for  $P_i \cap P_j$ ,  $k - w$  points for  $P_i$  alone, and  $k - w$  points for  $P_j$  alone, there are  $\binom{2k-w}{w, k-w, k-w}$  ways to split the  $2k - w$  chosen points into  $P_i$  and  $P_j$ . Based on this and Inequality (13), Inequality (11) turns out to

$$\begin{aligned} \text{Var}(X) &\leq \sum_{w=1}^k \sum_{|P_i \cap P_j|=w} \mathbb{E}[X_i X_j] \\ &\leq \sum_{w=1}^k \binom{n}{2k-w} \binom{2k-w}{w, k-w, k-w} c'_w r^{4k-2w-2} \\ &\leq \sum_{w=1}^k c''_w n^{2k-w} r^{4k-2w-2}. \end{aligned}$$

for some constants  $c''_w > 0$ . Consider (9) and note that by (6),  $\mathbb{E}[X]^2 \geq c'' n^{2k} r^{4k-4}$ , for some constant  $c'' > 0$ . Thus,

$$\begin{aligned} \frac{\text{Var}(X)}{\mathbb{E}[X]^2} &\leq \sum_{w=1}^k \frac{c''_w n^{2k-w} r^{4k-2w-2}}{c'' n^{2k} r^{4k-4}} = \sum_{w=1}^k \frac{c''_w}{c''} \cdot \frac{1}{n^w r^{2w-2}} \\ &= \frac{c''_1}{c''} \cdot \frac{1}{n^1 r^0} + \frac{c''_2}{c''} \cdot \frac{1}{n^2 r^2} + \cdots + \frac{c''_k}{c''} \cdot \frac{1}{n^k r^{2k-2}} \end{aligned} \quad (14)$$

Since  $r = \omega(n^{\frac{-k}{2k-2}})$ , all terms in (14) tend to zero. This proves the convergence in (9). Thus,  $\Pr[X = 0] \rightarrow 0$  as  $n \rightarrow \infty$ . This implies that if  $r = \omega(n^{\frac{-k}{2k-2}})$ , then  $G(n, r)$  has a connected subgraph on  $k$  vertices with high probability.  $\square$

In the following theorem we show that if  $k = O(1)$ , then  $n^{\frac{-k}{2k-2}}$  is also a threshold for  $G(n, r)$  to have a clique of size  $k$ ; this is an increasing property.

**Theorem 2.** *Let  $k \geq 2$  be an integer constant. Then,  $n^{\frac{-k}{2k-2}}$  is a distance threshold function for  $G(n, r)$  to have a clique of size  $k$ .*

*Proof.* By Theorem 1, if  $r = o(n^{\frac{-k}{2k-2}})$ , then w.h.p.  $G(n, r)$  has no connected subgraph on  $k$  vertices, and hence it has no clique of size  $k$ . This proves the first statement. We prove the second statement by adjusting the proof of Theorem 1, which is based on the second moment method. Assume  $r = \omega(n^{\frac{-k}{2k-2}})$ . Let  $P_1, \dots, P_{\binom{n}{k}}$  be an enumeration of all subsets of  $k$  points. Let  $X_i$  be equal to 1 if  $DG[P_i]$  is a clique, and 0 otherwise. Let  $X = \sum X_i$ .

Partition the unit square into a set  $\{s_1, \dots, s_{1/r^2}\}$  of squares of side length  $r$ . Let  $S_t$  be the  $2r \times 2r$  square which has  $s_t$  on its left bottom corner. If  $DG[P_i]$  is a clique then  $P_i$  lies in  $S_t$  for some  $t \in \{1, \dots, 1/r^2\}$ . Therefore,

$$\Pr[X_i = 1] \leq 4^k r^{2k-2}.$$

Now, partition the unit square into a set  $\{s_1, \dots, s_{2/r^2}\}$  of squares with diagonal length  $r$ . If all points of  $P_i$  fall in the square  $s_t$ , then  $DG[P_i]$  is a clique. Thus,

$$\Pr[X_i = 1] \geq \frac{1}{2^{k-1}} r^{2k-2}.$$

Since  $k \geq 2$  is a constant, we have

$$\begin{aligned} \mathbb{E}[X_i] &= \Theta(r^{2k-2}), \\ \mathbb{E}[X] &= \Theta(n^k r^{2k-2}). \end{aligned}$$

In view of Chebyshev's inequality we need to show that  $\frac{\text{Var}(X)}{\mathbb{E}[X]^2}$  tends to 0 as  $n$  goes to infinity. We bound  $\text{Var}(X)$  from above by Inequality (11). Consider the  $k$ -tuples  $P_i$  and  $P_j$  under the condition that  $DG[P_i]$  is a clique. Let  $|P_i \cap P_j| = w$ , and let  $x$  be a point in  $P_i \cap P_j$ . Partition the unit square into squares of side length  $r$ . Let  $s_x$  be the square containing  $x$ . Let  $S_x$  be the  $3r \times 3r$  square centered at  $s_x$ . In order for  $DG[P_j]$  to be a clique, the remaining  $k-w$  points of  $P_j$  must lie in  $S_x$ . Thus,

$$\mathbb{E}[X_i X_j] \leq c'_w r^{4k-2w-2},$$

for some constant  $c'_w > 0$ . By a similar argument as in the proof of Theorem 1, we can show that for some constants  $c'', c''_w > 0$  the followings inequalities are valid:

$$\begin{aligned} \text{Var}(X) &\leq \sum_{w=1}^k c''_w n^{2k-w} r^{4k-2w-2}, \\ \frac{\text{Var}(X)}{\mathbb{E}[X]^2} &\leq \sum_{w=1}^k \frac{c''_w}{c''} \cdot \frac{1}{n^w r^{2w-2}}. \end{aligned}$$

Since  $r = \omega(n^{\frac{-k}{2k-2}})$ , the last inequality tends to 0 as  $n$  goes to infinity. This completes the proof for the second statement.  $\square$

As a direct consequence of Theorem 2, we have the following corollary.

**Corollary 1.** *A threshold for  $G(n, r)$  to have an edge is  $n^{-1}$ , and a threshold for  $G(n, r)$  to have a triangle is  $n^{-\frac{3}{4}}$ .*

**Remark.** *The results of Theorems 1 and 2 can be generalized to higher (fixed) dimensions by using analogous partitioning of the space into cells.*

### 3 The threshold for $G(n, r)$ to be plane

In this section we investigate the threshold for a random geometric graph to be plane; this is a decreasing property. Recall that  $G(n, r)$  is plane if no two of its edges cross. As a warm-up exercise we first prove a simple result which is based on the connectivity threshold for random geometric graphs, which is known to be  $\sqrt{\ln n/n}$ .

**Theorem 3.** *If  $r \geq \sqrt{\frac{c \ln n}{n}}$ , with  $c \geq 36$ , then w.h.p.  $G(n, r)$  is not plane.*

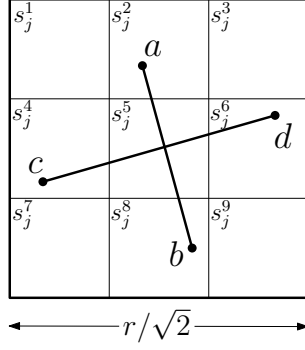


Figure 2: An square of diameter  $r$  which is partitioned into nine sub-squares.

*Proof.* In order to prove that w.h.p.  $G(n, r)$  is not plane, we show that w.h.p. it has a pair of crossing edges. Partition the unit square into squares each with diagonal length  $r$ . Then subdivide each such square into nine sub-squares as depicted in Figure 2. There are  $\frac{18}{r^2}$  sub-squares, each of side length  $\frac{r}{3\sqrt{2}}$ . The probability that no point lies in a specific sub-square is  $(1 - \frac{r^2}{18})^n$ . Thus, the probability that there exists an empty sub-square is at most

$$\frac{18}{r^2} \left(1 - \frac{r^2}{18}\right)^n \leq n \left(1 - \frac{c \ln n}{18n}\right)^n \leq n^{1-c/18} \leq \frac{1}{n},$$

when  $c \geq 36$ . Therefore, with probability at least  $1 - \frac{1}{n}$  all sub-squares contain points. By choosing four points  $a, b, c,$  and  $d$  as depicted in Figure 2, it is easy to see that the edges  $(a, b)$  and  $(c, d)$  cross. Thus, w.h.p.  $G(n, r)$  has a pair of crossing edges, and hence w.h.p. it is not plane.  $\square$

In fact, Theorem 3 ensures that w.h.p. there exists a pair of crossing edges in each of the squares. This implies that there are  $\Omega\left(\frac{n}{\ln n}\right)$  disjoint pairs of crossing edges, while for  $G(n, r)$  to be not plane we need to show the existence of at least one pair of crossing edges. Thus, the value of  $r$  provided by the connectivity threshold seems rather weak. By a different approach, in the rest of this section we show that  $n^{-\frac{2}{3}}$  is the correct threshold.

**Lemma 1.** *Let  $(a, b)$  and  $(c, d)$  be two crossing edges in  $G(n, r)$ , and let  $Q$  be the convex quadrilateral formed by  $a, b, c,$  and  $d$ . Then, two adjacent sides of  $Q$  are edges of  $G(n, r)$ .*

*Proof.* Refer to Figure 3. At least one of the angles of  $Q$ , say  $\angle cad$ , is bigger than or equal to  $\pi/2$ . It follows that in the triangle  $\triangle cad$  the side  $cd$  is the longest, i.e.,  $|cd| \geq \max\{|ac|, |ad|\}$ . Since  $|cd| \leq r$ , both  $|ac|$  and  $|ad|$  are at most  $r$ . Thus,  $ac$  and  $ad$ —which are adjacent—are edges of  $G(n, r)$ .  $\square$

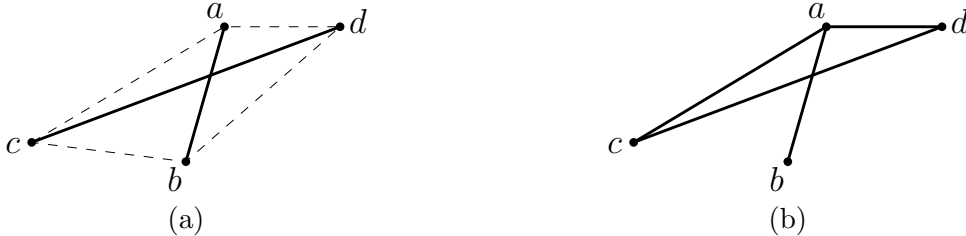


Figure 3: (a) Illustration of Lemma 1. (b) Crossing edges  $(a, b)$  and  $(c, d)$  form an anchor.

In the proof of Lemma 1,  $a$  is connected to  $b, c,$  and  $d$ . So the distance between  $a$  to each of  $b, c,$  and  $d$  is at most  $r$ . Thus, we have the following corollary.



**Corollary 2.** *The endpoints of every two crossing edges in  $G(n, r)$  are at distance at most  $2r$  from each other. Moreover, there exists an endpoint which is within distance  $r$  from other endpoints.*

Based on the proof of Lemma 1, we define an *anchor* as a set  $\{a, b, c, d\}$  of four points in  $G(n, r)$  such that three of them form a triangle, say  $\triangle cad$ , and the fourth vertex,  $b$ , is connected to  $a$  by an edge which crosses  $cd$ ; see Figure 3(b). We call  $a$  as the *crown* of the anchor. The crown is within distance  $r$  from the other three points. Note that  $bc$  and  $bd$  may or may not be edges of  $G(n, r)$ . In view of Lemma 1, two crossing edges in  $G(n, r)$  form an anchor. Conversely, every anchor in  $G(n, r)$  introduces a pair of crossing edges.

**Observation 1.** *The graph  $G(n, r)$  is plane if and only if it has no anchor.*

**Theorem 4.** *A threshold for  $G(n, r)$  to be plane is  $n^{-\frac{2}{3}}$ .*

*Proof.* In order to show that  $G(n, r)$  is plane, by Observation 1, it is enough to show that it has no anchors. Every anchor has four points and it is connected. By Theorem 1, if  $r = o(n^{-\frac{2}{3}})$ , then w.h.p.  $G(n, r)$  has no connected subgraph on 4 points, and hence it has no anchors. This proves the first statement.

We prove the second statement by adjusting the proof of Theorem 1 for  $k = 4$ . Assume  $r = \omega(n^{-\frac{2}{3}})$ . Let  $P_1, \dots, P_{\binom{n}{4}}$  be an enumeration of all subsets of 4 points. Let  $X_i$  be equal to 1 if  $DG[P_i]$  contains an anchor, and 0 otherwise. Let  $X = \sum X_i$ . In view of Chebyshev's inequality we need to show that  $\frac{\text{Var}(X)}{\mathbb{E}[X]^2}$  tends to 0 as  $n$  goes to infinity.

Partition the unit square into a set  $\{s_1, \dots, s_{2/r^2}\}$  of squares with diagonal length  $r$ . Then, subdivide each square  $s_j$  into nine sub-squares  $s_j^1, \dots, s_j^9$  as depicted in Figure 2. If each of  $s_j^1, s_j^3, s_j^7, s_j^9$  or each of  $s_j^2, s_j^4, s_j^6, s_j^8$  contains a point of  $P_i$ , then  $DG[P_i]$  is a convex clique of size four and hence it contains an anchor. Thus,

$$\Pr[X_i = 1] \geq \frac{r^6}{2^3} \cdot \frac{2}{9^4}.$$

This implies that  $\mathbb{E}[X_i] = \Omega(r^6)$ , and hence  $\mathbb{E}[X] = \Omega(n^4 r^6)$ . Therefore,

$$\mathbb{E}[X]^2 \geq c'' n^8 r^{12},$$

for some constant  $c'' > 0$ . By a similar argument as in the proof of Theorem 1 we bound the variance of  $X$  from above by

$$\text{Var}(X) \leq c_1'' n^7 r^{12} + c_2'' n^6 r^{10} + c_3'' n^5 r^8 + c_4'' n^4 r^6.$$

Since  $r = \omega(n^{-\frac{2}{3}})$ ,  $\frac{\text{Var}(X)}{\mathbb{E}[X]^2}$  tends to 0 as  $n$  goes to infinity. That is, w.h.p.  $G(n, r)$  has an anchor. By Observation 1, w.h.p.  $G(n, r)$  is not plane.  $\square$

As a direct consequence of the proof of Theorem 4, we have the following:

**Corollary 3.** *With high probability if a random geometric graph is not plane, then it has a clique of size four.*

Note that every anchor introduces a crossing and each crossing introduces an anchor. Since, every anchor is a connected graph and has four points, by (6) we have the following corollary.

**Corollary 4.** *The expected number of crossings in  $G(n, r)$  is  $\Theta(n^4 r^6)$ .*

## 4 The threshold for $G(n, r)$ to be planar

In this section we investigate the threshold for the planarity of a random geometric graph; this is a decreasing property. By Kuratowski's theorem, a finite graph is planar if and only if it does not contain a subgraph that is a subdivision of  $K_5$  or of  $K_{3,3}$ . Note that any plane random geometric graph is planar too; observe that the reverse statement may not be true. Thus, the threshold for planarity seems to be larger than the threshold of being plane. By a similar argument as in the proof of Theorem 3 we can show that if  $r \geq \sqrt{c \ln n/n}$ , then w.h.p. each square with diagonal length  $r$  contains  $K_5$ , and hence  $G(n, r)$  is not planar.

**Theorem 5.** *A threshold for  $G(n, r)$  to be planar is  $n^{-\frac{5}{8}}$ .*

*Proof.* By Theorem 2, if  $r = \omega(n^{-\frac{5}{8}})$ , then w.h.p.  $G(n, r)$  has a clique of size 5. Thus, w.h.p.  $G(n, r)$  contains  $K_5$  and hence it is not planar.

If  $r = o(n^{-\frac{5}{8}})$ , then by Theorem 1, w.h.p.  $G(n, r)$  has no connected subgraph on 5 points, and hence it has no  $K_5$ . Similarly, if  $r = o(n^{-\frac{3}{5}})$ , then w.h.p.  $G(n, r)$  has no connected subgraph on 6 points, and hence it has no  $K_{3,3}$ . Since  $n^{-\frac{5}{8}} < n^{-\frac{3}{5}}$ , it follows that if  $r = o(n^{-\frac{5}{8}})$ , then w.h.p.  $G(n, r)$  has neither  $K_5$  nor  $K_{3,3}$  as a subgraph.

Note that, in order to prove that  $G(n, r)$  is planar, we have to show that it does not contain any subdivision of either  $K_5$  or  $K_{3,3}$ . Any subdivision of either  $K_5$  or  $K_{3,3}$  contains a connected subgraph on  $k \geq 5$  vertices. Since  $n^{-5/8} < n^{-k/(2k-2)}$  for all  $k \geq 5$ , in view of Theorem 1, we conclude that if  $r = o(n^{-\frac{5}{8}})$ , then w.h.p.  $G(n, r)$  has no subdivision of  $K_5$  and  $K_{3,3}$ , and hence  $G(n, r)$  is planar.  $\square$

As a direct consequence of the proof of Theorem 5, we have the following:

**Corollary 5.** *With high probability if a random geometric graph does not contain a clique of size five, then it is planar.*

## 5 Free edges in $G(n, r)$

Motivated by the problem of finding bottleneck plane matching of a point set (see [1]), we considered the problem of finding a free edge in unit disk graphs. A *free edge* in  $G(n, r)$  is an edge whose interior is not intersected by other edges of  $G(n, r)$ . Although at the first glance it seems that any unit disk graph has at least one free edge, this is not always true. Figure 4 shows examples of unit disk graphs that do not have any free edges, i.e., all the edges are crossed. These examples imply that the ‘‘existence of a free edge’’ is not a monotone property for  $G(n, r)$ . In this section we investigate the existence of free edges in random geometric graphs. Throughout this section we assume that points are chosen on a torus, i.e., a unit square with wraparound.

**Lemma 2.** *If  $r = \omega\left(\frac{1}{n}\right)$  and  $r = o\left(\frac{1}{n^{1/2+\epsilon}}\right)$  for any constant  $\epsilon > 0$ , then  $G(n, r)$  has a free edge with high probability.*

*Proof.* Since  $r = \omega\left(\frac{1}{n}\right)$ , by Corollary 1,  $G(n, r)$  has at least one edge with high probability.

Let  $k \geq 3$  be an integer constant such that  $\frac{k}{2k-2} \leq \frac{1}{2} + \epsilon$ . Then  $r = o(n^{\frac{-k}{2k-1}})$ . By Theorem 1,  $G(n, r)$  has no connected component of size  $k$  with high probability. Moreover, there exists an integer constant  $c$ , where  $2 \leq c < k$ , such that  $r = \omega(n^{\frac{-c}{2c-2}})$  and  $r = o(n^{\frac{-(c+1)}{2(c+1)-2}})$ . Theorem 2 implies that with high probability  $G(n, r)$  has a clique of size  $c$ . Let  $H$  be such a clique. Since  $H$  is a clique, all edges of the convex hull of  $H$  are present in  $G(n, r)$ , however, these edges may

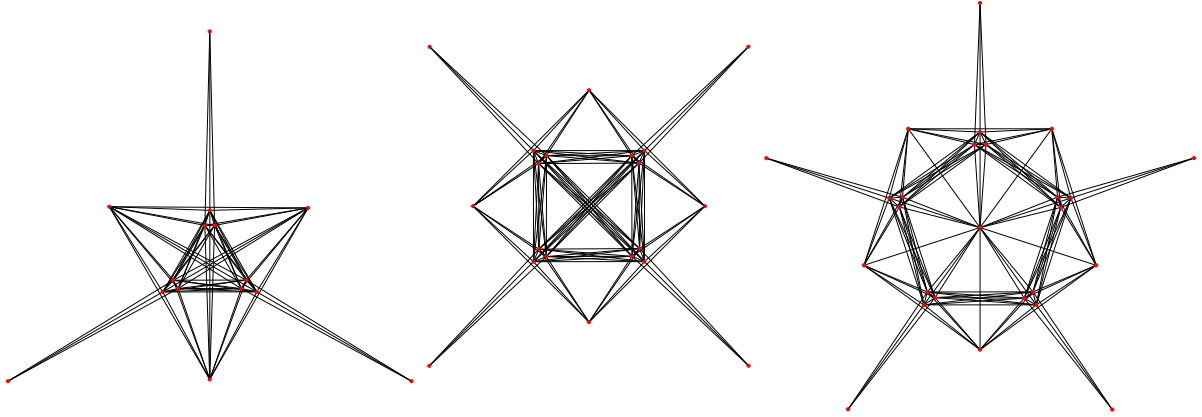


Figure 4: Unit disk graphs with 15, 20, and 26 points, that do not have any free edge.

not be on the convex hull of  $G(n, r)$ . We claim that all the edges of the boundary of the convex hull of the clique  $H$  are free in  $G(n, r)$ . For contradiction assume otherwise, and take an edge  $(a, b)$  from the boundary of the convex hull of  $H$  that is crossed by some other edge  $(d, e)$ . Note that at least one of  $d$  and  $e$  is not a vertex of  $H$  because  $(a, b)$  is on the convex hull of  $H$ . Let  $d$  be a vertex that is not in  $H$ . By Corollary 2, in  $G(n, r)$ , there is a path (consists of at most two edges) between  $d$  and each of  $a$  and  $b$ . This in turn gives a connected subgraph with  $c + 1$  vertices in  $G(n, r)$ . However, by Theorem 1, such a connected component cannot exist with high probability. This completes the proof of the theorem.  $\square$

We refer to an edge  $(u, v)$  in  $G(n, r)$  as a *long edge* if  $|uv| \geq \sqrt{\frac{8 \ln n}{n}}$ , where  $|uv|$  denotes the Euclidean distance between  $u$  and  $v$ . For a given region  $R$  in the unit square let  $A(R)$  denote the area of  $R$ . Let  $P$  denote the set of  $n$  random points.

**Lemma 3.** *With high probability, none of the long edges of  $G(n, r)$  are free.*

*Proof.* If  $r < \sqrt{8 \ln n/n}$  then  $G(n, r)$  has no long edges. Assume that  $r \geq \sqrt{8 \ln n/n}$ . Let  $L$  be the set consisting of all the long edges of  $G(n, r)$ . Note that  $L$  contains at most  $\binom{n}{2}$  edges. Take any edge  $(u, v)$  in  $L$ . Consider the closed disk that has  $(u, v)$  as a diameter. Let  $H_1(u, v)$  and  $H_2(u, v)$  be the two half-disks on both sides of  $(u, v)$ . We say that  $H_1(u, v)$  (resp.  $H_2(u, v)$ ) is *empty* if it does not contain any point of  $P \setminus \{u, v\}$ . Observe that if both  $H_1(u, v)$  and  $H_2(u, v)$  are non-empty, then  $(u, v)$  is not a free edge. We are going to show that with high probability both  $H_1(u, v)$  and  $H_2(u, v)$  are non-empty.

Let  $\mathcal{H}$  be the set of all half-disks defined by the edges in  $L$ . Let  $H$  be any half-disk in  $\mathcal{H}$ , and let  $d$  be the diameter of  $H$ . Then,  $A(H) = \frac{\pi d^2}{8}$ . Thus, with probability  $\left(1 - \frac{\pi d^2}{8}\right)^{n-2}$ ,  $H$  is empty. Since  $d \geq \sqrt{8 \ln n/n}$ , we have

$$\left(1 - \frac{\pi d^2}{8}\right)^{n-2} \leq \left(1 - \frac{\pi \ln n}{n}\right)^{n-2} \leq e^{-\frac{\pi(n-2) \ln n}{n}} \leq e^{-3 \ln n} = \frac{1}{n^3},$$

where the last inequality is valid because  $\pi(n-2) > 3n$  as  $n \rightarrow \infty$ . Therefore, with probability at most  $\frac{1}{n^3}$ ,  $H$  is empty. Since  $\mathcal{H}$  contains at most  $n^2$  half-disks, the probability that  $\mathcal{H}$  contains an empty half-disk is at most  $n^2 \cdot \frac{1}{n^3} = \frac{1}{n}$ . Thus, with probability at least  $1 - \frac{1}{n}$  all half-disks in  $\mathcal{H}$  are non-empty. Therefore, both  $H_1(u, v)$  and  $H_2(u, v)$  contain points from  $P \setminus \{u, v\}$ . This produces an edge in  $G(n, r)$  that crosses  $(u, v)$ . Thus, with high probability all the long edges in  $G(n, r)$  are crossed.  $\square$

In the following lemma we prove a result that is stronger than the result of Lemma 3.

**Lemma 4.** *If  $r = \Omega\left(\frac{1}{\sqrt{s}}\left(\frac{\ln n}{n}\right)^{3/4}\right)$  for some function  $s$  of  $n$ , then  $s = \Omega\left(\left(\frac{\ln n}{n}\right)^{3/2}\right)$ , and with high probability every edge of  $G(n, r)$  of length at least  $s$  is not free.*

*Proof.* Since  $r \leq 1$ , we have  $\sqrt{s} > \left(\frac{c \ln n}{n}\right)^{3/4}$  for some constant  $c > 0$ . This implies the first part of the claim, that is  $s = \Omega\left(\left(\frac{\ln n}{n}\right)^{3/2}\right)$ .

Now we show that every edge of length at least  $s$  is crossed. Take any edge  $(u, v)$  of length at least  $s$  from  $G(n, r)$ . If  $|uv| \geq \sqrt{8 \ln n/n}$ , then  $(u, v)$  is a long edge, and by Lemma 3,  $(u, v)$  is not free with high probability.

Assume  $|uv| < \sqrt{8 \ln n/n}$ , and thus,  $s < \sqrt{8 \ln n/n}$ . This implies that  $r \geq c' \sqrt{\ln n/n}$  for some constant  $c' > 0$ . In order to show that  $(u, v)$  is crossed, we are going to define two regions,  $V_1$  and  $U$ , on opposite sides of  $(u, v)$  such that the area of each region is least  $\frac{\pi \ln n}{n}$ . Then we show that each of  $V_1$  and  $U$  contains a point of  $P$  such that these two points are connected by an edge that crosses  $(u, v)$ .

Without loss of generality assume that  $(u, v)$  is vertical, and let  $x$  be its midpoint. Let  $V_1$  be a sector of angle  $\frac{\pi}{3}$  to the left of oriented edge  $(u, v)$  that has radius  $\sqrt{6 \ln n/n}$  and is centered at  $x$  such that its sides make angle  $\frac{\pi}{3}$  with  $(u, v)$ ; see Figure 5. Note that  $A(V_1) = \frac{\pi \ln n}{n}$ . As in the proof of Lemma 3, with high probability  $V_1$  contains a point of  $P$ . Let  $w$  be such a point.

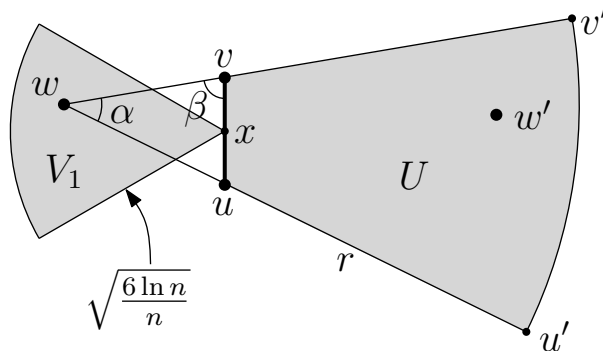


Figure 5: Illustration of Lemma 4. Each of the shaded regions has area at least  $\frac{\pi \ln n}{n}$ .

Extend the line segments  $wu$  and  $wv$  to  $u'$  and  $v'$ , respectively, such that  $|wu'| = |wv'| = r$ . Let  $V_2$  be the sector of radius  $r$  that is centered at  $w$  and has  $wu'$  and  $wv'$  as its sides. Let  $U$  be the subset of  $V_2$  that is to the right of oriented edge  $(u, v)$ . Note that if  $U$  contains a point  $w' \in P$ , then  $(w, w')$  is an edge of  $G(n, r)$  and crosses  $(u, v)$ ; see Figure 5.

We would like the radius  $r$  to be sufficiently large such that the area of  $U$  be at least  $\frac{\pi \ln n}{n}$ . Without loss of generality assume that  $w$  is closer to  $v$  than to  $u$ , i.e.,  $|wu| \geq |wv|$ . Since  $|uv| < \sqrt{8 \ln n/n}$ , we have  $|ux| = |vx| < \sqrt{2 \ln n/n}$ . Moreover  $|wu| < |wx| + |ux| < \sqrt{6 \ln n/n} + \sqrt{2 \ln n/n} < 4\sqrt{\ln n/n}$ . By picking  $c' \geq 8$  we have  $r \geq 8\sqrt{\ln n/n}$ ; this makes sure that  $r > 2|wu|$ , and subsequently  $r > 2|wv|$ . Thus,  $A(U) > \frac{1}{2}A(V_2)$ . Let  $\alpha = \angle u w v$ . Then,  $A(V_2) = \frac{\alpha r^2}{2}$  and  $A(U) > \frac{\alpha r^2}{4}$ . If  $\alpha \geq \frac{\pi}{3}$ , then

$$A(U) > \frac{\pi r^2}{12} \geq \frac{64\pi \ln n}{12n} > \frac{\pi \ln n}{n}.$$

Assume  $\alpha < \frac{\pi}{3}$ . Since  $s > 0$ , we have  $\alpha > 0$ . Let  $\beta = \angle w v u$ . Observe that  $\frac{\pi}{3} < \beta < \frac{2\pi}{3}$ . By the law of sines we have

$$\sin \alpha = \sin \beta \cdot \frac{|uv|}{|wu|} > \frac{\sqrt{3}}{2} \cdot \frac{|uv|}{|wu|} \geq \frac{\sqrt{3}}{2} \cdot \frac{s}{|wu|}.$$

Note that  $\sin \alpha < \alpha$ , for all  $0 < \alpha < \frac{\pi}{3}$ . Thus,

$$\alpha > \frac{\sqrt{3}}{2} \cdot \frac{s}{|wu|},$$

and hence

$$A(U) > \frac{\alpha r^2}{4} > \frac{\sqrt{3}}{8} \cdot \frac{sr^2}{|wu|} > \frac{\sqrt{3}}{32} \cdot \frac{sr^2}{\sqrt{\ln n/n}}.$$

To ensure  $A(U) \geq \frac{\pi \ln n}{n}$ , it is enough to guarantee the following inequality

$$\frac{\sqrt{3}}{32} \cdot \frac{sr^2}{\sqrt{\ln n/n}} \geq \frac{\pi \ln n}{n}. \quad (15)$$

However, Inequality (15) is valid if

$$r \geq \frac{c}{\sqrt{s}} \cdot \left( \frac{\ln n}{n} \right)^{\frac{3}{4}},$$

for some constant  $c \geq 8$ . This is ensured by the statement of the lemma.

To this end, for each edge  $(u, v)$  in  $G(n, r)$  of length at least  $s$ , we have two regions  $V_1$  and  $U$  such that each of them has area at least  $\frac{\pi \ln n}{n}$ . Let  $\mathcal{R}$  be the set of all such regions for all edges of  $G(n, r)$  whose lengths are at least  $s$ . Note that  $\mathcal{R}$  contains at most  $n^2$  regions. As in the proof of Lemma 3, the probability that a region  $R \in \mathcal{R}$  does not contain any point of  $P$  is at most  $\frac{1}{n^3}$ , and thus, the probability that there exists an empty region in  $\mathcal{R}$  is at most  $n^2 \cdot \frac{1}{n^3} = \frac{1}{n}$ . Thus, with probability at least  $1 - \frac{1}{n}$  all regions in  $\mathcal{R}$  have a point of  $P$ . Therefore, both  $V_1$  and  $U$  contain points from  $P$ . This produces an edge in  $G(n, r)$  that crosses  $(u, v)$ . Thus, with high probability all the edges of  $G(n, r)$  of length at least  $s$  are crossed.  $\square$

**Theorem 6.** *Let  $G(n, r)$  be a random geometric graph.*

1. *If  $r = o\left(\frac{1}{n}\right)$  then w.h.p.  $G(n, r)$  has no edge.*
2. *If  $r = \omega\left(\frac{1}{n}\right)$  and  $r = o\left(\frac{1}{n^{2/3}}\right)$  then w.h.p. every edge of  $G(n, r)$  is free.*
3. *If  $r = \omega\left(\frac{1}{n^{2/3}}\right)$  and  $r = o\left(\frac{1}{n^{1/2+\epsilon}}\right)$  for any constant  $\epsilon > 0$ , then w.h.p.  $G(n, r)$  has a free edge.*
4. *If  $r = \omega\left(\frac{(\ln n)^{3/4}}{n^{1/4}}\right)$  then w.h.p.  $G(n, r)$  has no free edge.*

*Proof.* The first part is immediate from Corollary 1. For the second part, in this range there exists an edge by Corollary 1, and there is no crossing by Theorem 4. The third part has been proved in Lemma 2. It remains to prove the last part. By Corollary 1, with high probability no edge of the  $G(n, r)$  can have length  $o\left(\frac{1}{n}\right)$ . Thus, with high probability all edges of  $G(n, r)$  have length  $\Omega\left(\frac{1}{n}\right)$ . Therefore, the result follows from Lemma 4 by setting  $s = \frac{1}{n}$ ; notice that  $\frac{1}{n} = \Omega\left(\left(\frac{\ln n}{n}\right)^{3/2}\right)$  which is required for this lemma.  $\square$

## 6 Thresholds for having an independent set of size $k$

In this section we investigate thresholds for a random geometric graph to have an independent set of a given size; this is a decreasing property. Throughout this section we assume that points are chosen on a torus, i.e., a unit square with wraparound. Note that if  $G(n, r)$  has no edge then it has an independent set of size  $n$ . Moreover, if  $G(n, r)$  has at least one edge, then it has no independent set of size  $n$ . By Corollary 1,  $n^{-1}$  is a radius threshold for  $G(n, r)$  to have an edge. Therefore,  $n^{-1}$  is a radius threshold for  $G(n, r)$  to have an independent set of size  $n$ .

**Theorem 7.** *Let  $k$  be a positive integer. If  $r > \sqrt{\frac{c \ln(\frac{en}{k})}{k}}$  for some constant  $c > 0$ , then  $k = \Omega(\ln n)$  and  $G(n, r)$  has no independent set of size  $k$  with high probability.*

*Proof.* The first claim that  $k = \Omega(\ln n)$  is implied by the fact that  $r$  is at most 1. Now we prove the second claim. Let  $P_1, \dots, P_{\binom{n}{k}}$  be an enumeration of all subsets of  $k$  points in  $G(n, r)$ . Let  $X_i$  be a random variable such that

$$X_i = \begin{cases} 1 & \text{if } P_i \text{ is an independent set,} \\ 0 & \text{otherwise.} \end{cases}$$

Let the random variable  $X$  counts the number of independent sets  $P_i$ . Thus,  $X = \sum_{i=1}^{\binom{n}{k}} X_i$ . Since  $X_i$ 's have identical distributions, we have

$$\mathbb{E}[X] = \binom{n}{k} \mathbb{E}[X_1]. \quad (16)$$

Observe that  $\mathbb{E}[X_1] = \Pr[X_1 = 1]$ . In order to compute/estimate the probability of  $P_1$  being an independent set we observe the following. Let  $P_1 = \{p_1, \dots, p_k\}$ . For each point  $p_i \in P_1$ , let  $D(p_i, r)$  and  $D(p_i, r/2)$  be the two disks of radius  $r$  and  $r/2$ , respectively, which are centered at  $p_i$ . For each  $i = 2, \dots, k$ , let  $A_i$  be the event that  $D(p_i, r/2)$  is disjoint from all the disks  $D(p_j, r/2)$ , for  $j = 1, \dots, i-1$ , i.e.,

$$D(p_i, r/2) \cap D(p_j, r/2) = \emptyset, \quad \text{for all } j = 1, \dots, i-1.$$

See Figure 6. Observe that if  $P_1$  is an independent set, then all the disks  $D(p_j, r/2)$ , with  $j \in \{1, \dots, k\}$  are pairwise disjoint. Therefore,

$$\text{if } P_1 \text{ is an independent set, then } (A_1 \wedge A_2 \wedge \dots \wedge A_k).$$

Thus, we have

$$\begin{aligned} \Pr[X_1 = 1] &\leq \Pr[A_1 \wedge \dots \wedge A_k] \\ &= \Pr[A_1] \cdot \Pr[A_2|A_1] \cdot \Pr[A_3|A_2 \wedge A_1] \cdots \Pr[A_k|A_{k-1} \wedge \dots \wedge A_1]. \end{aligned} \quad (17)$$

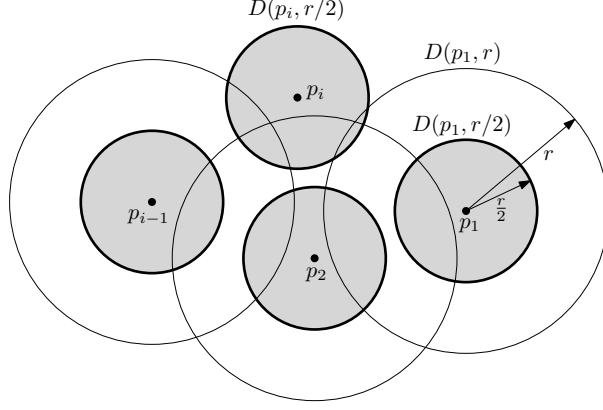


Figure 6:  $p_i$  should be outside  $D(p_j, r)$  for all  $j = 1, \dots, i-1$ .

Note that  $\Pr[A_1] = 1$ , and we are going to compute  $\Pr[A_i | A_{i-1} \wedge \dots \wedge A_1]$  for  $i = 2, \dots, k$ . In order for  $D(p_i, r/2)$  to be disjoint from  $\bigcup_{j=1}^{i-1} D(p_j, r/2)$ ,  $p_i$  should lie outside  $\bigcup_{j=1}^{i-1} D(p_j, r)$ .

$$\begin{aligned}
\Pr[A_i | A_{i-1} \wedge \dots \wedge A_1] &= \Pr \left[ p_i \notin \bigcup_{j=1}^{i-1} D(p_j, r) \mid A_{i-1} \wedge \dots \wedge A_1 \right] \\
&= 1 - \Pr \left[ p_i \in \bigcup_{j=1}^{i-1} D(p_j, r) \mid A_{i-1} \wedge \dots \wedge A_1 \right] \\
&\leq 1 - \Pr \left[ p_i \in \bigcup_{j=1}^{i-1} D(p_j, r/2) \mid A_{i-1} \wedge \dots \wedge A_1 \right] \\
&= 1 - (i-1)\pi(r/2)^2 \\
&\leq e^{-\frac{(i-1)\pi r^2}{4}}.
\end{aligned} \tag{18}$$

By Inequalities (17) and (18) we have

$$\begin{aligned}
\mathbb{E}[X_1] &\leq \Pr[A_1 \wedge \dots \wedge A_k] \\
&\leq 1 \cdot e^{-\frac{\pi r^2}{4}} \cdot e^{-\frac{2\pi r^2}{4}} \dots e^{-\frac{(k-1)\pi r^2}{4}} \\
&= e^{-\frac{\pi r^2}{4}(1+2+\dots+(k-1))} \\
&= e^{-\frac{\pi r^2}{8}k(k-1)} \\
&\leq e^{-\frac{\pi r^2 k^2}{16}},
\end{aligned}$$

where the last inequality is valid because  $k-1 > \frac{k}{2}$  (recall that  $k = \Omega(\ln n)$ ). This and Equality (16) imply that

$$\mathbb{E}[X] \leq \binom{n}{k} \cdot e^{-\frac{\pi r^2 k^2}{16}} \leq \left(\frac{en}{k}\right)^k \cdot e^{-\frac{\pi r^2 k^2}{16}}.$$

Note that  $r > \sqrt{\frac{c \ln(\frac{en}{k})}{k}}$ . By Markov's Inequality we have:

$$\begin{aligned}
\Pr[X \geq 1] &\leq E[X] \\
&\leq \left(\frac{en}{k}\right)^k e^{-\frac{\pi r^2 k^2}{16}} \\
&\leq \left(\frac{en}{k}\right)^k e^{-\frac{\pi ck}{16} \ln(\frac{en}{k})} \\
&= \left(\frac{en}{k}\right)^k \left(\frac{en}{k}\right)^{-\frac{\pi ck}{16}} \\
&= \left(\frac{en}{k}\right)^{k(1-\frac{\pi c}{16})},
\end{aligned}$$

which tends to zero if  $c > \frac{16}{\pi}$  and  $n \rightarrow \infty$ . This implies that with high probability  $X = 0$ , and hence  $G(n, r)$  has no independent set of size  $k$ .  $\square$

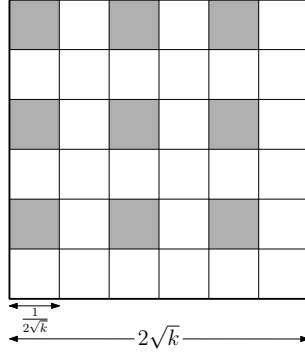


Figure 7: The shaded squares belong to  $S$ .

**Theorem 8.** Let  $k \leq \frac{n}{4 \ln n}$  be an integer. If  $r \leq \frac{1}{2\sqrt{k}}$ , then  $G(n, r)$  has an independent set of size  $k$  with high probability.

*Proof.* Partition the unit square into sub-squares each of side length  $\frac{1}{2\sqrt{k}}$ . Note that this partition contains  $4k$  sub-squares. Let  $S$  be the set of  $k$  sub-squares selected from every second column and every second row. See Figure 7. The probability that no point lies in a specific sub-square is  $(1 - \frac{1}{4k})^n$ . Thus, the probability that there exists an empty sub-square in  $S$  is at most

$$k \left(1 - \frac{1}{4k}\right)^n \leq k e^{-\frac{n}{4k}} \leq \frac{1}{4 \ln n},$$

where the second inequality is valid because  $k \leq \frac{n}{4 \ln n}$ . Therefore, with probability at least  $1 - \frac{1}{4 \ln n}$  all sub-squares in  $S$  contain points. On the other hand, since  $r \leq \frac{1}{2\sqrt{k}}$ , in  $G(n, r)$  there is no edge between two points in different sub-squares of  $S$ . Thus, by choosing one point from each sub-square in  $S$  we obtain an independent set of size  $k$ .  $\square$

**Corollary 6.** Let  $k > \frac{n}{4 \ln n}$  be an integer. If  $r > \sqrt{\frac{c \ln \ln n}{k}}$ , for some constant  $c > 0$ , then  $G(n, r)$  has no independent set of size  $k$  with high probability.

*Proof.* Since  $k > \frac{n}{4 \ln n}$ , we have  $\ln(\frac{en}{k}) \leq 1 + \ln 4 + \ln \ln n$ . Thus, the statement follows by Theorem 7.  $\square$



## 7 Concluding Remarks

We presented thresholds for a random geometric graph,  $G(n, r)$ , to have a connected subgraph or a clique of constant size, to be plane, and to be planar. We also investigated the existence of free edges and independent sets in  $G(n, r)$ . Following are natural extensions of the problems discussed in this paper that are worth pursuing:

1. Since any monotone property of  $G(n, r)$  has a sharp threshold function [10, 14], it would be interesting to provide such functions for the above properties.
2. Having a connected subgraph or a clique of size  $k$  are monotone properties. For any integer constant  $k \geq 2$ , we proved that  $n^{\frac{-k}{2k-2}}$  is a threshold function for having a connected subgraph or a clique of size  $k$ . A natural problem is to extend these results for the case where  $k$  is not necessarily a constant.
3. Having an independent set of size  $k$  is a monotone property in  $G(n, r)$ . We provided lower and upper bounds on  $r$  for the existence of an independent set of size  $k$ . A natural problem is to improve any of the provided bounds.
4. The existence of a free edge in  $G(n, r)$  is not a monotone property. We proved that if  $r = o(\frac{1}{n})$  or  $r = \Omega\left(\frac{(\ln n)^{3/4}}{n^{1/4}}\right)$ , then w.h.p.  $G(n, r)$  has no free edge. Moreover, if  $r = \omega\left(\frac{1}{n}\right)$  and  $r = o\left(\frac{1}{n^{1/2+\epsilon}}\right)$  for any constant  $\epsilon > 0$ , then w.h.p.  $G(n, r)$  has a free edge. The threshold behaviour for the existence of a free edge in  $G(n, r)$  when  $r$  belongs to the interval  $\left[\frac{1}{n^{1/2+\epsilon}}, \frac{(\ln n)^{3/4}}{n^{1/4}}\right]$  remains an open problem.
5. We provided examples of unit disk graphs that do not have any free edge. An interesting question is to determine if every planar unit disk graph has at least one free edge.
6. We explored conditions on  $k$  and  $r$  for existence of independent sets of size  $k$  in  $G(n, r)$ . Our conditions (in Theorems 7 and 8) do not cover the entire range of  $k$  and  $r$ . It would be interesting to fill these gaps.

## References

- [1] A. K. Abu-Affash, A. Biniiaz, P. Carmi, A. Maheshwari, and M. H. M. Smid. Approximating the bottleneck plane perfect matching of a point set. *Comput. Geom.*, 48(9):718–731, 2015.
- [2] N. Alon and J. H. Spencer. *The probabilistic method*. John Wiley & Sons, 3rd edition, 2007.
- [3] M. J. B. Appel and R. P. Russo. The connectivity of a graph on uniform points on  $[0, 1]^d$ . *Statistics & Probability Letters*, 60(4):351–357, 2002.
- [4] P. Balister, A. Sarkar, and B. Bollobás. Percolation, connectivity, coverage and colouring of random geometric graphs. In *Handbook of Large-Scale Random Networks*, pages 117–142. Springer, 2008.
- [5] B. Bollobás. *Random graphs*. Cambridge University Press, 2001.
- [6] B. Bollobás and A. Thomason. Threshold functions. *Combinatorica*, 7(1):35–38, 1987.

- [7] J. Bourgain and G. Kalai. Threshold intervals under group symmetries. *Convex Geometric Analysis MSRI Publications Volume 34*, pages 59–63, 1998.
- [8] M. Bradonjić and W. Perkins. On sharp thresholds in random geometric graphs. In *Approximation, Randomization, and Combinatorial Optimization. Algorithms and Techniques, APPROX/RANDOM*, pages 500–514, 2014.
- [9] P. Erdős and A. Rényi. On the evolution of random graphs. *Publ. Math. Inst. Hungar. Acad. Sci.*, 5:17–61, 1960.
- [10] E. Friedgut and G. Kalai. Every monotone graph property has a sharp threshold. *Proceedings of the American Mathematical Society*, 124(10):2993–3002, 1996.
- [11] E. Gilbert. Random graphs. *The Annals of Mathematical Statistics*, pages 1141–1144, 1959.
- [12] E. Gilbert. Random plane networks. *Journal of the Society for Industrial & Applied Mathematics*, 9(4):533–543, 1961.
- [13] E. Godehardt and J. Jaworski. On the connectivity of a random interval graph. *Random Struct. Algorithms*, 9(1-2):137–161, 1996.
- [14] A. Goel, S. Rai, and B. Krishnamachari. Sharp thresholds for monotone properties in random geometric graphs. In *Proceedings of STOC*, pages 580–586. ACM, 2004.
- [15] P. Gupta and P. R. Kumar. Critical power for asymptotic connectivity in wireless networks. In *Stochastic Analysis, Control, Optimization and Applications*, pages 547–566, 1998.
- [16] P. Hall. On the coverage of  $k$ -dimensional space by  $k$ -dimensional spheres. *The Annals of Probability*, 13(3):991–1002, 1985.
- [17] S. Janson. Random coverings in several dimensions. *Acta Mathematica*, 156(1):83–118, 1986.
- [18] B. Krishnamachari, S. B. Wicker, R. Béjar, and M. Pearlman. Critical density thresholds in distributed wireless networks. In *Communications, information and network security*, 2002.
- [19] G. L. McColm. Threshold functions for random graphs on a line segment. *Combinatorics, Probability and Computing*, 13:373–387, 2001.
- [20] P. Panchapakesan and D. Manjunath. On the transmission range in dense ad hoc radio networks. In *Proceedings of IEEE Signal Processing Communication (SPCOM)*, 2001.
- [21] M. D. Penrose. The longest edge of the random minimal spanning tree. *The annals of applied probability*, pages 340–361, 1997.
- [22] M. D. Penrose. On  $k$ -connectivity for a geometric random graph. *Random Struct. Algorithms*, 15(2):145–164, 1999.
- [23] M. D. Penrose. *Random geometric graphs*, volume 5. Oxford University Press Oxford, 2003.
- [24] J. H. Spencer. *Ten lectures on the probabilistic method*, volume 52. SIAM, 1987.